



LDYC LADIES' ROUND THE ISLAND RACE '23

Sailing Instructions

1) REGATTA RACES & STARTING TIMES:

LDYC Ladies' Round the Island Race – Saturday 16th December 2023

- 08h55 All Classes
- Cut off time 17H00 16th December 2023
- The cut-off time may be extended at the discretion of the Race Officer.

2) RULES:

2.1) The organising authority is Lake Deneys Yacht club. The race will be sailed under the 2021 to 2024 World Sailing Racing Rules of Sailing (RRS), the prescription of SAS, and the rules of the individual classes, excepts where amended by the sailing instructions. Yachts participating in this race shall conform to the Equipment Rules of Sailing (ERS) 2021-2024. The regatta is designated as category "C" in terms of appendix 1, Section2, Regulation 20. The starting procedures will be as detailed in Paragraph 5 and as per Sailing Instructions. The sponsor's decals, are to be displayed on the hull. All yachts are required to carry sufficient drinking water for the duration of the race. Lifejackets are to be worn by all dinghy, catamaran, and junior sailors. The registered name and sail number must be displayed. Failure to meet these requirements may lead to disqualification.

2.2) A lady must helm the boat throughout the race.

3) NOTICES TO COMPETITORS:

Notices to competitors will be posted on the Official Notice Board located in the foyer of the Lake Deneys Yacht Club, on the Bridge Boat Notice Board, and on the WhatsApp group. Attention to alterations made to the Sailing Instructions

displayed either on the official Notice Board, the Bridge Boat Notice Board and WhatsApp group, will be by raising of the “L” flag, accompanied by one sound signal.

4) STARTS:

- 4.1) The starting line will be between the mast of LDYC bridge boat or if the committee boat is used, an orange flag and the LDYC Mark.
- 4.2) The Bridge Boat will display a RED or GREEN flag to indicate Port or Starboard rounding of Groot Island
- 4.3) Any yachts starting later than 10 minutes after the starting signal may be scored Did Not Start (DNS).
- 4.4) There shall be one start for all classes. Class flag will be white.

5) THE FINISH:

- 5.1) The finish line will be between the masts of the Bridge and the Limit Boat flying a blue “on station” flag.
- 5.2) Boats finishing races are required to leave the finishing area.

Boats may not sail through the finishing line again, and any that do, will have their last time of crossing the finish line recorded as their finish.

- 5.3) Bridge Boat and Limit Boat/limit mark are “marks of the course” when starting and finishing a race.

6) SCORING:

- 6.1) For overall results, yachts will be handicapped according to the NKA rating systems available on the www.rtir.co.za webpage.

7) PENALTY SYSTEM:

World Sailing Rule 44 shall apply except that RRS 44.1 shall apply to all Catamarans and Micro Multihulls.

8) TIME LIMIT:

- 8.1) The cut off time shall be 17h00 16th December 2021.
- 8.2) The cut off time may be extended at the discretion of the Race Officer.
- 8.3) Round the Island Race: Boats failing to finish before 17h00 will be scored

“Did Not Finish”.

8. PROTESTS:

- 8.3) Protests shall be written on forms available at the Race Office and delivered within 1 hour after the time of the “protesting boat” finish, to the Race Office.
- 8.4) Where possible, all protests will be heard at the LDYC Clubhouse on the day of the particular race.
- 8.5) Protests will be heard in the approximate order of receipt beginning one hour after the finishing time of the last boat.
- 8.6) Notice of protest hearings will be posted on the regatta notice board,. The protest committee will attempt to contact all parties involved. Should any of the parties not be contactable, the hearing will proceed without that party.

9. DECLARATIONS:

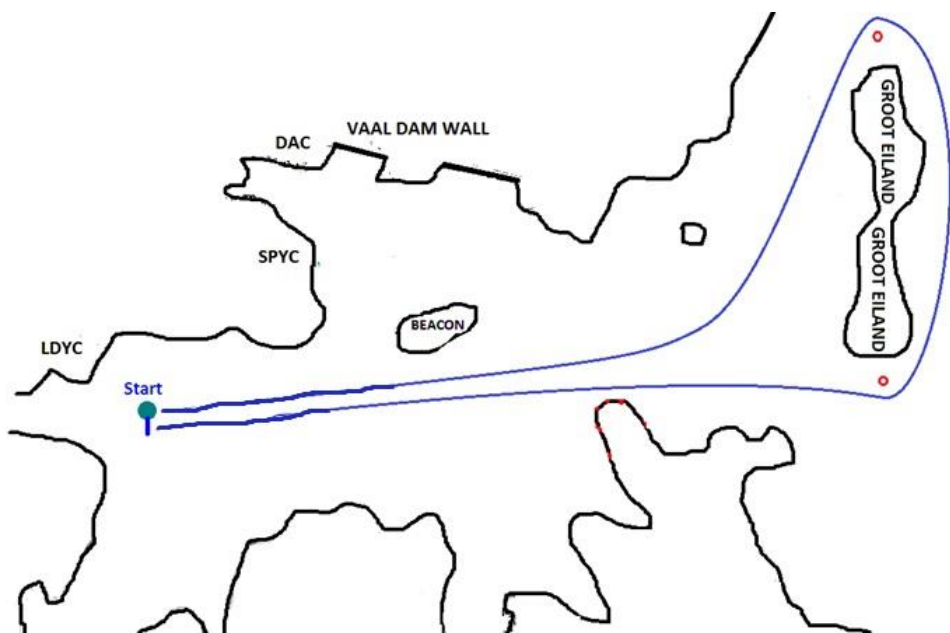
A boat retiring shall notify the Race Committee at the Race Office by on the WhatsApp group, or by phoning LDYC office on 087 160 0556.

10. REGULATIONS:

- 10.3) Rescue and Safety craft will be available; however, boats are required to standby and offer assistance to any boat in difficulties. NOTE RRS 1.1
- 10.4) International Regulations for Preventing Collisions at Sea will apply. Yachts in the process of raising sails shall be deemed to be restricted in ability to maneuver. Keel boats in danger of running aground shall be deemed to be constrained by draught.

11. LIABILITY:

Competitors shall sail entirely at their own risk. None of the organizations or persons concerned in the running of the race accepts any liability for damage, injury, or death, suffered during or in connection with the races, or at any other time.



ROUND THE ISLAND RACE COURSE CARD

The Blue line denotes the course around Groot Eiland